

OFFICE SPACE AVAILABLE



207 Corporate Drive, Beaver Dam, Wisconsin

Immediate
Access to
Hwy 151



7,872 sq.ft. DIVISIBLE!

BUILDING DETAILS:

Year Built: 2004
Total Building Square Footage: 7,872
Available: 1,312 - 7,872 sq. ft. nnn
Construction Type: Tilt up concrete
Eave Height: 16'
Overhead Doors: Two (2) total
Parking Area: Ample
Electric Service: 200 amps each space - 3 phase

LOCATION:

207 Corporate Drive
Beaver Dam, WI

Zoning: Office or Light manufacturing / distribution

Office Layout: Rate based on open office concept with demising walls between tenant spaces. Further build-out details available upon request.

Type of Lease: Triple Net

Base Rent: \$8.50—12.00 / sq.ft.
based on Term.

See back of sheet for Floor Plan.

AVAILABLE IMMEDIATELY

Contact:

Jennifer Miller

#262.677.1121

jennifer@helsanwi.com

www.helsanwi.com

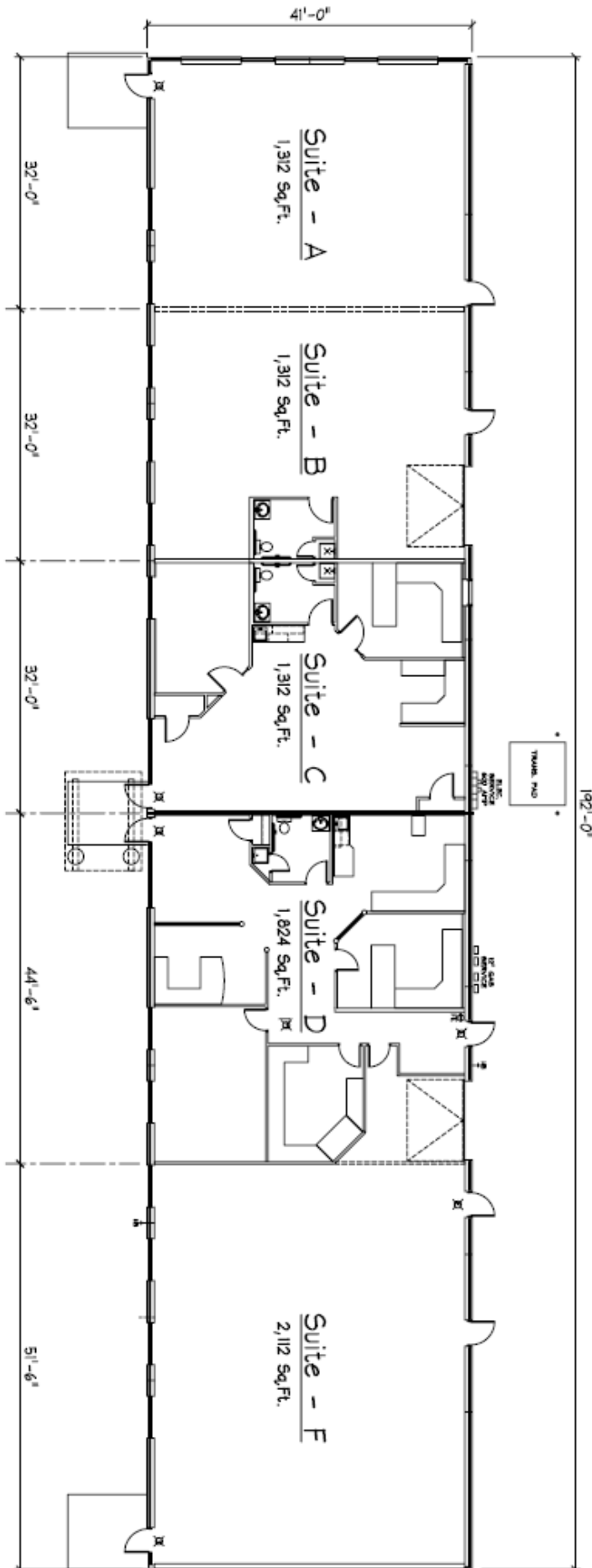




For information,
call or email:

Jennifer Miller
jennifer@helsanwi.com
#262-677-1121

www.helsanwi.com



FLOOR PLAN