

OFFICE BUILDING FOR SALE



207 Corporate Drive, Beaver Dam, Wisconsin

Immediate
Access to
Hwy 151



BUILDING DETAILS:

- Location: **207 Corporate Drive
Beaver Dam, WI**
- Year Built: **2004**
- Total Building Square Footage: **7,872 sq.ft.**
- Divisible by: **1,312 - 7,872 sq. ft. nnn**
- Construction Type: **Tilt up concrete**
- Eave Height: **16'**
- Overhead Doors: **Two (2) total**
- Parking Area: **Ample**
- Electric Service: **200 amps each space /
3 phase**
- Zoning: **Office or Light manufacturing /
distribution**
- Sale Price: **\$850,000**

LOCATION:

*Beaver Dam Business Park
207 Corporate Drive
Beaver Dam, WI*

Contact:

*Jennifer Miller
#262.677.1121*

*jennifer@helsanwi.com
www.helsanwi.com*

See back of sheet for Floor Plan.

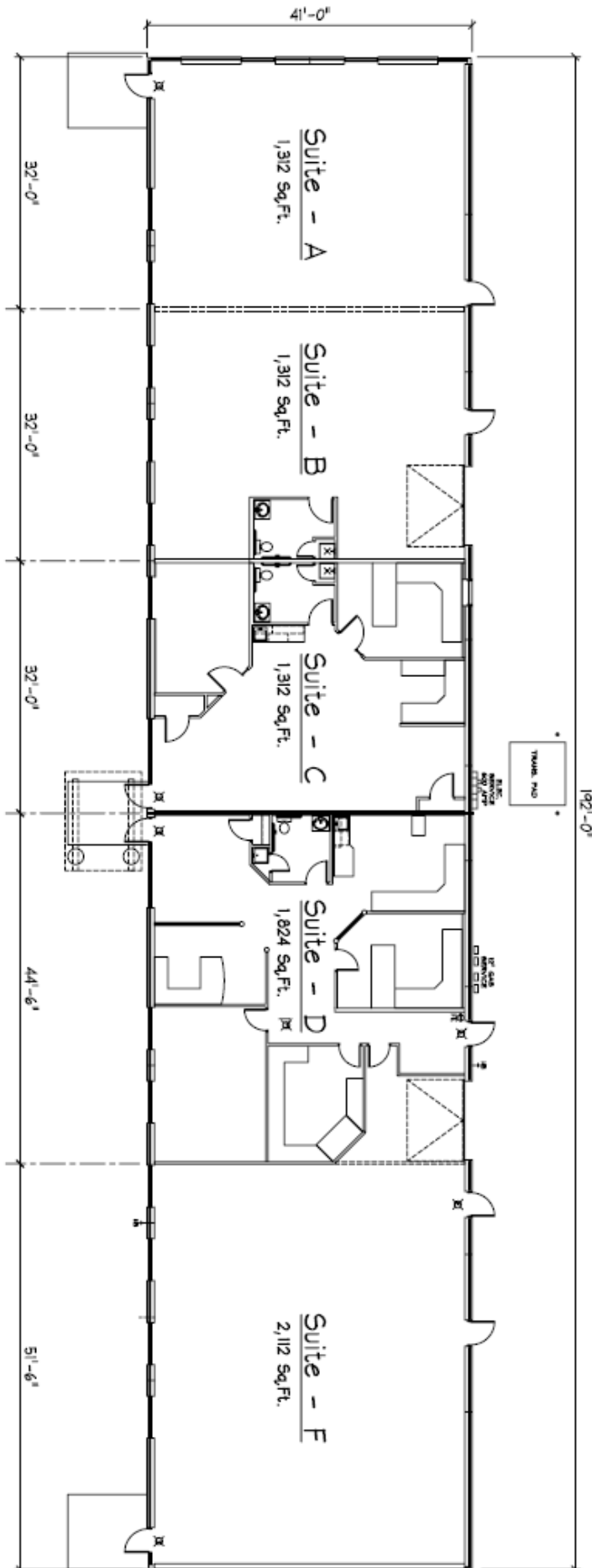
CALL TODAY!!



For information,
call or email:

Jennifer Miller
jennifer@helsanwi.com
#262-677-1121

www.helsanwi.com



FLOOR PLAN